

MOD TW100



Light Efficiency:

18 Lumen/Watt

Light Quality:

CRI: 93.1

Color Temperature:

3305 K

Output: 2006 lm

Peak: 3637 cd

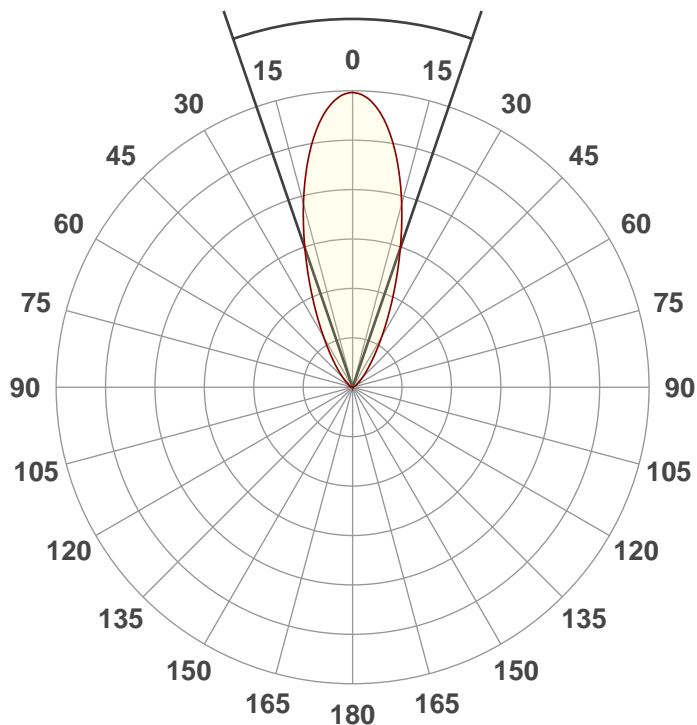
Power: 114 W

PF: 0.63



Beam Angle

37.8°



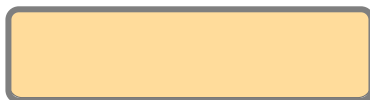
Test:

60Deg Full On

Date:

11/27/2018

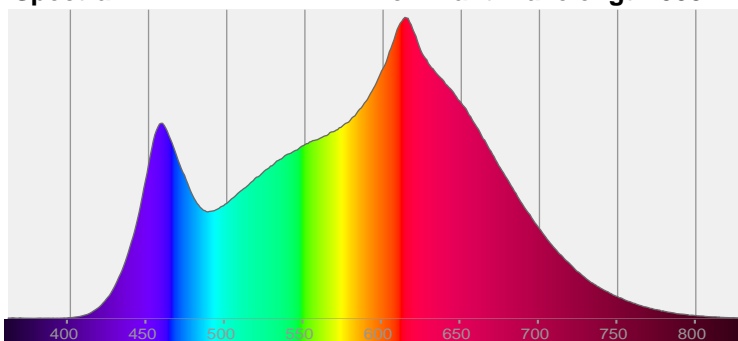
Note:



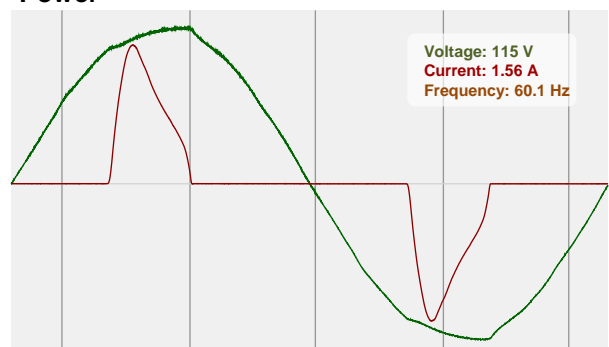
CIE 1931
x: 0.406
y: 0.369

Spectra

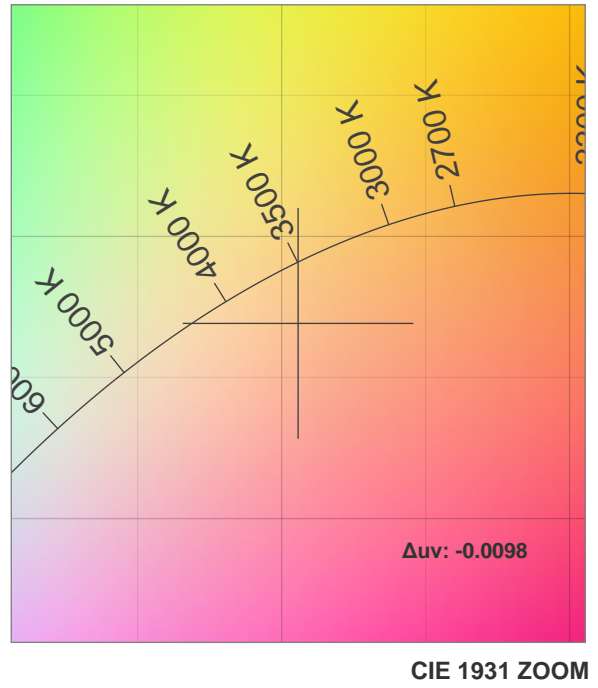
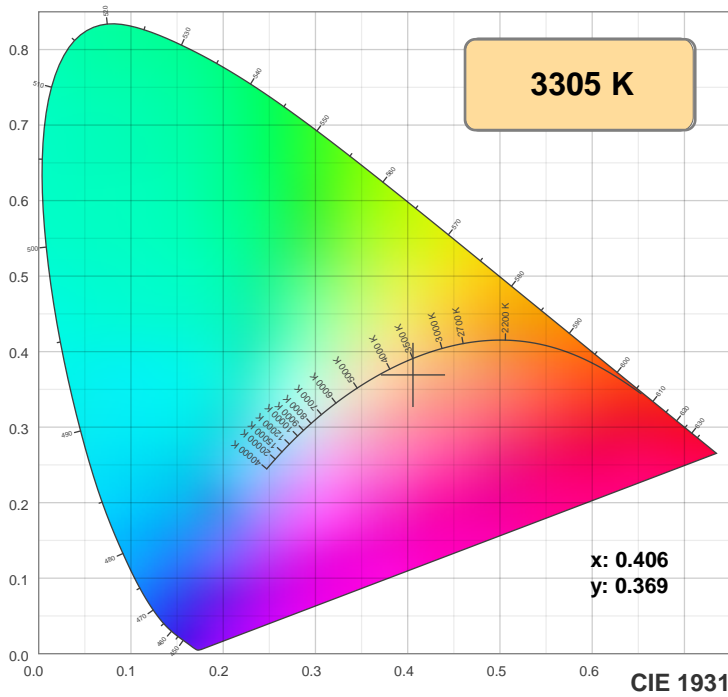
Dominant Wavelength: 588nm



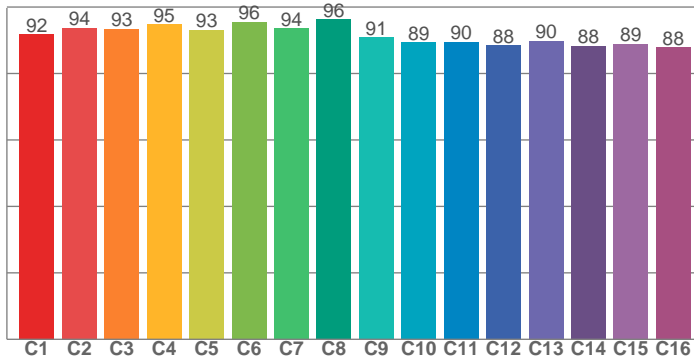
Power



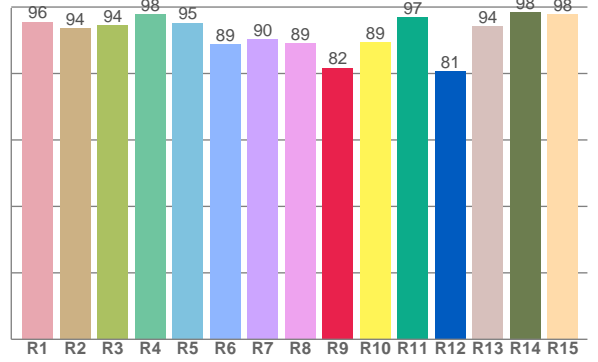
Color Details



TM30: 91.7



CRI: 93.1 (R1-R8)



CRI R values, only R1-R8 are used to calculate final CRI value

R1	R2	R3	R4	R5	R6	R7	R8	R9	R10	R11	R12	R13	R14	R15
95.6	93.5	94.5	97.9	95.3	88.7	90.3	89.1	81.7	89.5	96.9	80.6	94.2	98.5	97.7

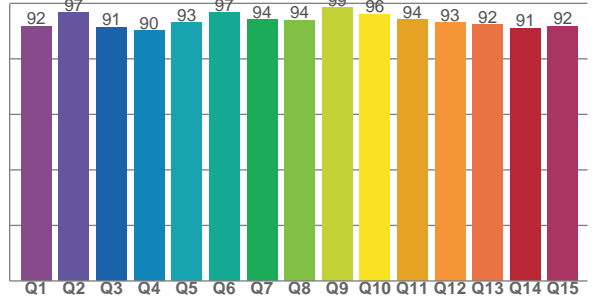
TM30 C values, 16 binned values out of total of 99 C values

C1	C2	C3	C4	C5	C6	C7	C8	C9	C10	C11	C12	C13	C14	C15	C16
91.8	93.6	93.4	94.7	93.1	95.6	93.6	96.2	90.9	89.3	89.5	88.5	89.8	88.3	88.9	87.9

CQS Q values

Q1	Q2	Q3	Q4	Q5	Q6	Q7	Q8	Q9	Q10	Q11	Q12	Q13	Q14	Q15
91.8	96.7	91.5	90.2	93.0	96.7	94.2	94.0	98.5	96.0	94.1	92.9	92.3	91.1	91.7

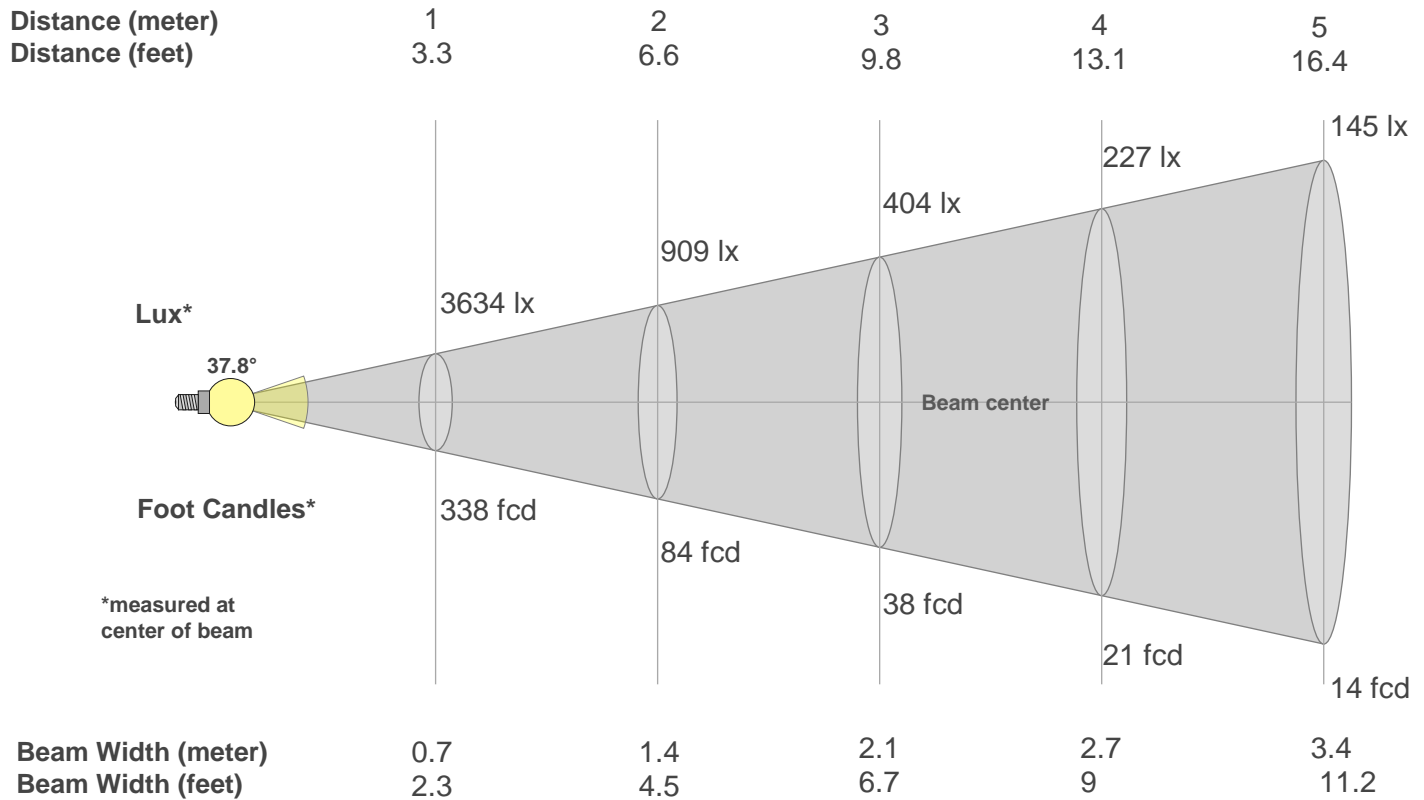
CQS: 93.2



Color Parameters

Color Temperature	Color Rendering Index	Red Component	Color Fidelity	Color Gamut	Color Quality Scale	Color Coordinate CIE 1931	Color Coordinate CIE 1931	Color Coordinate	Color Coordinate	Color Deviation from Black Body
CCT	CRI	CRI R9	TM30 Rf	TM30 Rg	CQS	x	y	u	v	Δuv
3305 K	93.1	81.7	91.7	100.9	93.2	0.406	0.369	0.245	0.335	-0.0098

Beam Details



Beam Intensities from 1-20m

m	1	2	3	4	5	6	7	8	9	10	11	12	13	14	15	16	17	18	19	20
ft	3.3	6.6	9.8	13.1	16.4	19.7	23	26.2	29.5	32.8	36.1	39.4	42.7	45.9	49.2	52.5	55.8	59.1	62.3	65.6
lx	3634	909	404	227	145	101	74	57	45	36	30	25	22	19	16	14	13	11	10	9
fcd	337.6	84.4	37.5	21.1	13.5	9.4	6.9	5.3	4.2	3.4	2.8	2.3	2	1.7	1.5	1.3	1.2	1	0.9	0.8

Intensities in 0° C-plane

0°	2°	4°	6°	8°	10°	12°	14°	16°	18°	20°	22°	24°	26°	28°	30°	32°	34°	36°	38°
3634	3609	3524	3388	3206	2988	2741	2478	2208	1939	1681	1439	1219	1025	857	713	591	489	404	334
100%	99%	97%	93%	88%	82%	75%	68%	61%	53%	46%	40%	34%	28%	24%	20%	16%	13%	11%	9%

Intensities in 90° C-plane

0°	2°	4°	6°	8°	10°	12°	14°	16°	18°	20°	22°	24°	26°	28°	30°	32°	34°	36°	38°
3634	3609	3524	3388	3206	2988	2741	2478	2208	1939	1681	1439	1219	1025	857	713	591	489	404	334
100%	99%	97%	93%	88%	82%	75%	68%	61%	53%	46%	40%	34%	28%	24%	20%	16%	13%	11%	9%

Intensities in 180° C-plane

0°	2°	4°	6°	8°	10°	12°	14°	16°	18°	20°	22°	24°	26°	28°	30°	32°	34°	36°	38°
3634	3603	3517	3380	3199	2982	2737	2475	2204	1937	1681	1442	1225	1033	865	721	598	495	410	338
100%	99%	97%	93%	88%	82%	75%	68%	61%	53%	46%	40%	34%	28%	24%	20%	16%	14%	11%	9%

Intensities in 270° C-plane

0°	2°	4°	6°	8°	10°	12°	14°	16°	18°	20°	22°	24°	26°	28°	30°	32°	34°	36°	38°
3634	3603	3517	3380	3199	2982	2737	2475	2204	1937	1681	1442	1225	1033	865	721	598	495	410	338
100%	99%	97%	93%	88%	82%	75%	68%	61%	53%	46%	40%	34%	28%	24%	20%	16%	14%	11%	9%

Beam Angle 50%	Field Angle 10%	Cutoff Angle 2,5%	Intensity Ratio in 120° Cone	Intensity Ratio in 90° Cone
37.8°	74.3°	104.8°	98.1%	91.8%